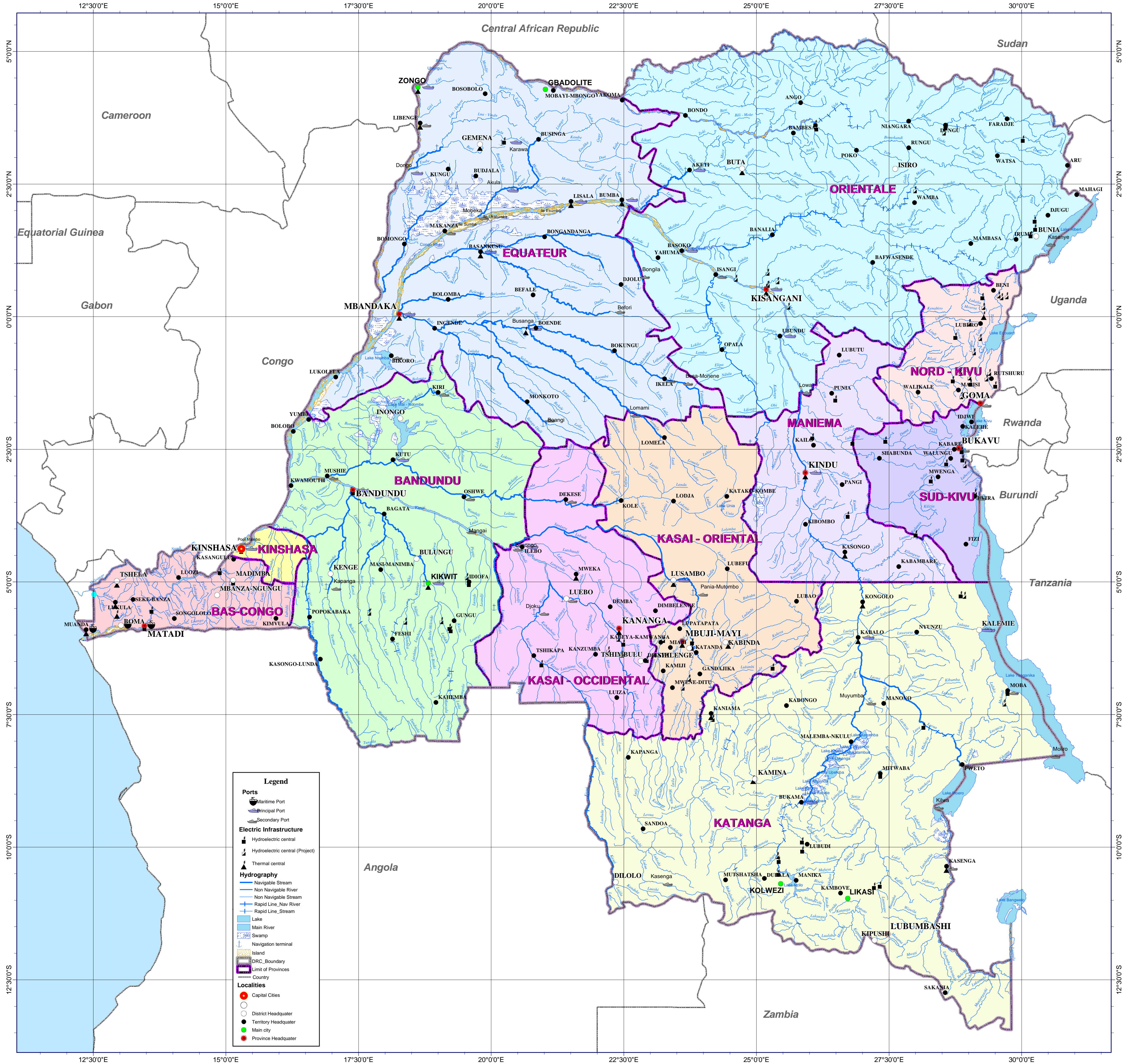


DEMOCRATIC REPUBLIC OF CONGO

DEMOCRATIC REPUBLIC OF CONGO
AFRICA

Map No. SP. 108
GIS UNIT, MONUC



Legend

Ports

- Maritime Port
- Principal Port
- Secondary Port

Electric Infrastructure

- Hydroelectric central
- Hydroelectric central (Project)
- Thermal central

Hydrography

- Navigable Stream
- Non Navigable River
- Non Navigable Stream
- Rapid Line_Nav River
- Rapid Line_Stream
- Lake
- Main River
- Swamp
- Navigation terminal
- Island
- DRC Boundary
- Limit of Provinces
- Country

Localities

- Capital Cities
- District Headquarter
- Territory Headquarter
- Main city
- Province Headquarter

General Map - Hydrography

Sources Data : - Carte Générale de la Rép. Dém. du Congo, IGNB & IGC, 1988.
- Répertoire des provinces et entités administratives, Ministère de l'intérieur, RDC, Kinshasa, 1998
- Tableau synoptique des Localités en RDC, IGC, 1980.
- DATUM : GCS_Clarke_1880_RGS
Updated and compiled by MONUC GIS Unit-Kinshasa.

UNITED NATIONS
MONUC - DPKO
GIS UNIT
For additional copies and information,
contact: GIS Unit Group MONUC HQ Kinshasa
Date: 05 August 2003



1:4,000,000



DRAFT

THIS MAP IS UNDER PROCESS OF BEING FINALIZED BY GIS UNIT.
Any error or omission noted should be directed to GIS-Unit MONUC Kinshasa

